



# Restoration Seed Capital Facility

## A NEW FACILITY TO PROMOTE INVESTMENT IN FOREST LANDSCAPE RESTORATION

**SUPPORTING FOREST RESTORATION IN DEVELOPING COUNTRIES,  
CONTRIBUTING TO CLIMATE ADAPTATION AND MITIGATION,  
BIODIVERSITY, AND SUSTAINABLE LIVELIHOODS**





# Restoration Seed Capital Facility

# 1

## Who is eligible?

Fund managers or investment advisers for investment funds dedicated to land-use activities with restoration or conservation benefits or interested in developing new funds in this space.



# 2

## What does the facility provide?

Co-funding for fund development or project pipeline development on a cost-sharing basis.



# 3

## Where is it active?

All ODA-eligible developing countries.

## Why a Restoration Seed Capital Facility?

Half of all forest has been cleared and degraded. An investment in forests is an investment in our future. The Restoration Seed Capital Facility will help the powerful forces of private finance recognize and seize the opportunities of nature-based solutions to combine productive activities with healthy ecosystems. This Facility will contribute to tackling climate change, protecting biodiversity and creating long-term resilient jobs in communities, thereby helping to achieve the Sustainable Development Goals, and commitments under the Paris Agreement and the Bonn Challenge.



## What Does The Restoration Seed Capital Facility Do?

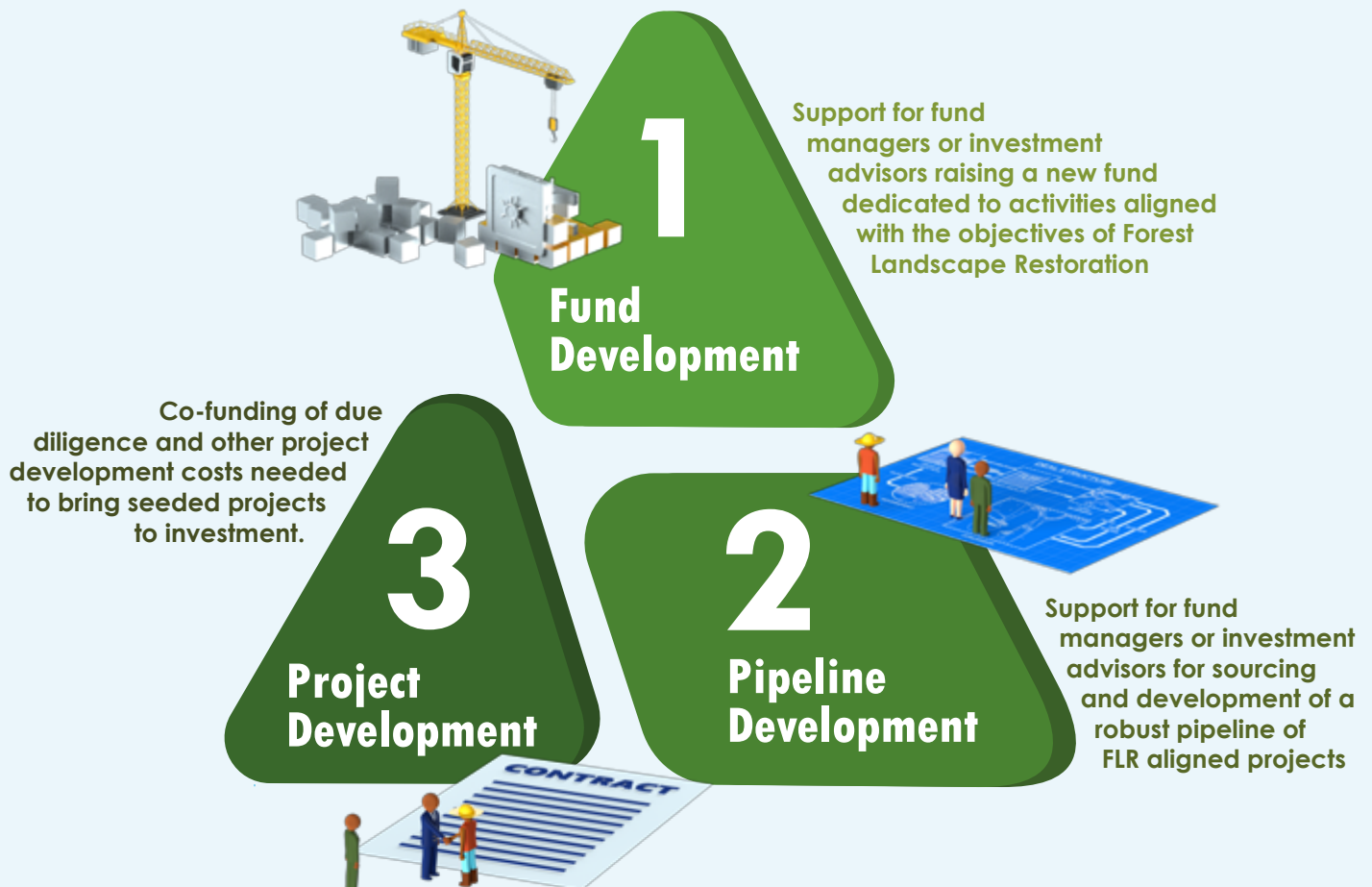
The Restoration Facility will promote private investment in forest restoration by making it easier for fund managers and investment advisors to set up funds dedicated to such activities and to bring projects to implementation faster. As a result, more projects will get funded, project developers and financial actors will enter the market in greater numbers, and the field will mature and scale up.



## Forest Restoration And Protection Combined With Sustainable Land Use Activities Such As:

- Agro-forestry
- Sustainable forest management
- Silvo-pastoralism
- Non-timber forest products
- Generation of carbon credits
- Payment for ecosystem services
- Supply chain investments supporting restorative land use activities

# RESTORATION SEED CAPITAL FACILITY SUPPORT LINES





# SELECTION CRITERIA



## Eligibility Criteria:

- **Entity Type:** Fund managers or investment advisers
- **Geographical scope:** Developing countries only
- **Activities:** Aligned with goals of Forest Landscape restoration (agroforestry, sustainable forestry, NTFP, Carbon credits, etc.)
- **Environmental and Social Risk Management:** Robust E&S management policies in place
- **Environmental and Social Impact Reporting:** Robust reporting framework in place

## Evaluation Criteria:

- **Capacity:** Experience, technical competence, geographical focus, integrity
- **Financial Additionality:** Ability to demonstrate how support will enable activities beyond business as usual
- **Impact additionality:** Ability to demonstrate how investment strategy translates into positive social and environmental impacts
- **Innovation:** Novel strategies, business models or geographies. Potential for replication and scalability

## FOREST LANDSCAPE RESTORATION INVESTMENT VIRTUOUS CYCLE





## POSITIVE IMPACTS FRAMEWORK

The investments advanced by the Restoration Seed Capital Facility provide positive impacts for climate adaptation and mitigation, biodiversity, and sustainable livelihoods. Risks are mitigated through robust environmental and social safeguard frameworks.

# FOREST

RESTORED AT SCALE,  
LEADING TO:

CLIMATE CHANGE  
MITIGATION



RESILIENCE TO  
CLIMATE CHANGE

BIODIVERSITY  
CONSERVATION



IMPROVED  
LIVELIHOODS

## Partnerships

Well-functioning partnerships are essential to ensuring the long-term success and innovative nature of forest landscape restoration. The Restoration Seed Capital Facility facilitates opportunities for cooperation between all practitioners in the field.

The Restoration Facility will build on the extensive networks engaged in the UN Decade for Action on Ecosystem Restoration.







**Restoration Seed Capital Facility**

**RSCF**

**[www.restorationfacility.org](http://www.restorationfacility.org)**

**[info@restorationfacility.org](mailto:info@restorationfacility.org)**



Implementing partners:



FINANCING  
SUSTAINABLE  
LAND USE



Supported by:



Federal Ministry  
for the Environment, Nature Conservation  
and Nuclear Safety



THE GOVERNMENT  
OF THE GRAND DUCHY OF LUXEMBOURG